

## ELO-BPC-6412

It adopts all-aluminum alloy structure, fanless and totally enclosed design, light and compact, with low power consumption. It is an industrial product specially designed for a variety of environments. It has rich interfaces, supports expansion, can meet the access of a variety of external devices, and supports 12V-36V wide voltage power supply; The complete machine has good scalability, practicability and EMC compatibility, and is widely used in industrial control, military industry, communication, power and network and other automation fields.

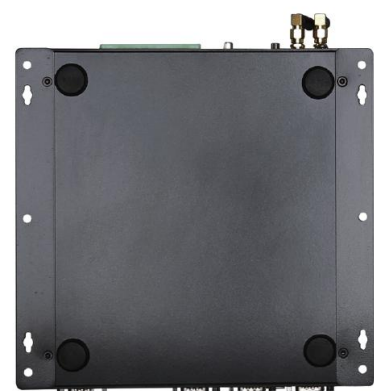
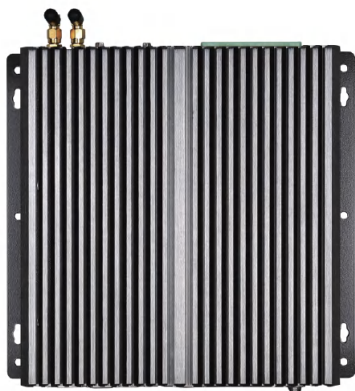
### Features >>

- Delicate and compact appearance, convenient installation
- Self-developed X86 architecture motherboard with multiple options
- Fanless totally enclosed design, low power consumption of the whole machine
- High integration, realizing WiFi/Bluetooth/Ethernet triple connection
- Abundant interfaces to meet the needs of various external equipment
- Industrial protection grade, stable system operation



### Product Model >>

Product model	ELO-BPC-6412
Processor	Intel Celeron J6412, 4 cores/4 wires, frequency 2.00 GHz (Maximum RF: 2.7GHz)



### Product Installation >>

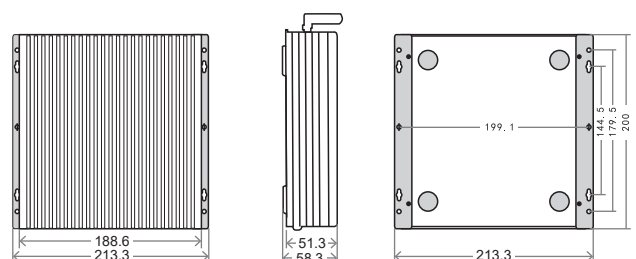


Desktop installation



Rack-mounted

### Product size >>



## Product Specifications >>

### Hardware Configuration

CPU	Intel Celeron J6412, 4 cores/4 wires, frequency 2.00 GHz (Maximum RF: 2.7GHz)
Integrated Graphics	Intel UHD Graphics 16 EUs
Memory	8GB DDR3(Optional: 4GB)
Hard disk	Standard: 256GB SSD (optional 512GB SSD, 1T/2T HDD)
WIFI	Support 2.4G/5G dual-band WiFi
Bluetooth	Bluetooth 4.0(optional)
System	WIN10/11, Ubuntu14.04.6/16.04.7/18.04.5/18.04.6/20.04.1/20.04.3/20.04.4/22.04, Centos7.8/8.4/7.9, Redhat7.4, Debian10.0/11.6

### Interface parameters

Power interface1	1*12P Phoenix terminal (Power supply/RS232*1/RS485*1/GPIO*5)
Power interface2	1*DC 【5.5*2.5mm】 Supporting wide voltage 12V-36V power supply
Power key	1*POWER
USB	4*USB 2.0, 2*USB 3.0
Network interface	2*LAN, 10M/100M/1000M adaptive Ethernet
HDMI	1*HDMI, Supporting HDMI data output, Up to 4K
SIM	1*SIM, Supporting various formats (Depending on 3G/4G module)
VGA	1*VGA
Audio interface	1*Audio I/O, support audio input and output
COM	4*COM (default: RS232, optional: RS485)
WiFi antenna	2*WiFi antenna
Grounding post	1*Grounding post (GND)

### Reliability parameters

Vibration protection	IEC 60068-2-64, random, 5 ~ 500 Hz, 1 hr/axis	Working temperature	-10 °C ~60°C
Impact protection	IEC 60068-2-27, half sine wave, duration 11ms	Storage temperature	-20 °C ~70 °C
Product certification	CCC/CE/FCC/EMC/CB/ROHS	Operating humidity	Humidity: 95% non condensing

### Other parameters

Power input	12V-36V power input
Static power	15W
Chassis structure	The aluminum alloy on the case surface has good seismic resistance and impact resistance
Body color	Gun black
Overall size	199.5 * 213.1 * 58.3mm (length * width * height)
Operating Weight	1.9KG
Installation method	Support desktop and rack installation
Warranty policy	Three years (one year free warranty)

## Product Installation >>

